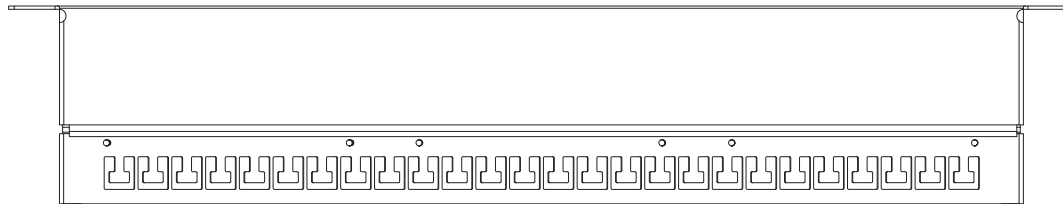
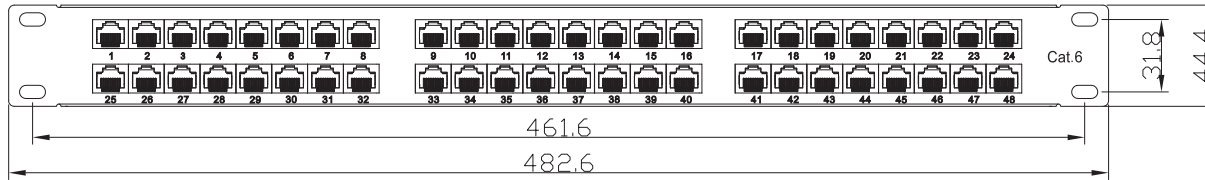
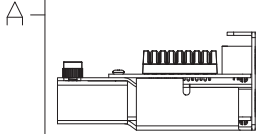


REV	DATE	MODIFICATION	DRAWN



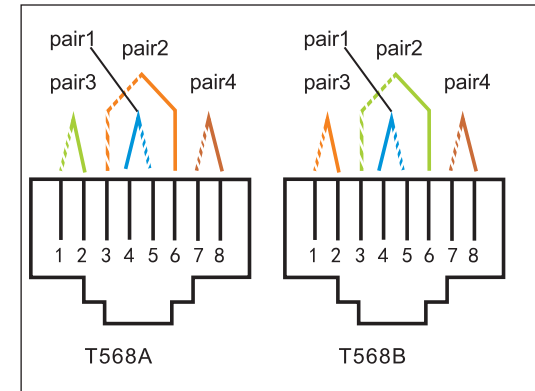
Specification:

Material:

1. Panel: 1.2mm/SPCC with Gray color painting.
2. RJ45 Housing: PBT.
3. RJ45 Contact material & finished:
 - 3-1. Phosphor Bronze with 50-60 micro-inch Nickel plated.
 - 3-2. Contact area: Min. 3mm 50 micro-inch Gold plated.
4. IDC House: PC.
5. IDC Terminal material & finished:
 - 5-1. Phosphor Bronze with 50 micro-inch Tin-Lead plated. over 50-60 micro-inch Nickel plated.
 - 5-2. Krone tool compatible.
 - 5-3. Use for 22-26AWG stranded and solid wire.

Performance:

- a. The IDC color combine two wirings of T568A & T568B.
- b. Insertion Force: 900 grms for 8 contacts.
- c. Retention Strength: 7.7 kgs between Jack and Plug.
- d. Operation Temperature: -40°C to 70°C
- e. Durability:
 - e-1. Jack: 750 cycles Plug-Jack mating and unmating test, Insertion cycles at 20 cycles/minute max. Contact resistance test per 100 cycles.
 - e-2. IDC: Min. 200 punching times.
- f. The Cat.6 performance is in compliance with the ANSI/TIA/EIA 568 B.2 standard.



DIMENSION IN mm (Inch) TOLERANCE UNLESS OTHERWISE SPECIFIED		MATERIAL	DWG. NO.	
.X±0.10	.X°±5°	TITLE		
.XX±0.05	.XX°±2°	DRAWN		
APPROVAL	CHECKED	NICK	SCALE 1/3	SHEET 1/1
			PROJ.	REV